

HWg IP Serial



HW group products: IP serial port + extensions (I/O, flash buffer, PING watchdog)



I/O Controllers

I/O Controller PL & I/O Controller HWg-ER88a

IP (Ethernet) enabled RS-232/485 serial port, 8 inputs, 8 outputs. Two units can be connected over IP to transfer the Serial port & I/O states (Box-2-Box mode). Input 1 controls remote Output 1, with a delay of less than 200 ms. Serial ports are also interconnected. I/O is controlled using a simple "Telnet" protocol.

- RS-232/485 serial port accessible over Ethernet
- 8 digital inputs (7 – 24 V)
- 8 outputs (max 50 V / 100 mA)
- SDK for various programming languages (HWg-SDK)



I/O Controller 1204

IP (Ethernet) enabled RS-232/485 serial port, 12 inputs, 4 outputs, "SOHO" version. Typical applications include remote access to dry contact inputs, serial port and signaling from a server-based application.

- RS-232/485 serial port accessible over Ethernet
- 12 digital inputs (dry contact)
- 4 outputs (max 50 V / 100 mA)
- SDK for various programming languages (HWg-SDK)
- Modes: Box-2-Box, TCP server, TCP Client / server, UDP



I/O Controller HWg-ER84a

IP (Ethernet) enabled RS-232/485 serial port, 8 inputs, 4 relay outputs. Two units can be connected over IP to transfer the Serial port & I/O states (Box-2-Box mode). Input 1 controls remote Output 1, with a delay of less than 200 ms. Serial ports are also interconnected. I/O is controlled using a simple "Telnet" protocol.

- RS-232/485 serial port accessible over Ethernet
- 8 digital inputs (7 – 24 V)
- 4 relay outputs (max 50 V)
- SDK for various programming languages (HWg-SDK)



I/O Controllers

I/O Controller PL & I/O Controller HWg-ER88a

IP (Ethernet) enabled RS-232/485 serial port, 8 inputs, 8 outputs. Two units can be connected over IP to transfer the Serial port & I/O states (Box-2-Box mode). Input 1 controls remote Output 1, with a delay of less than 200 ms. Serial ports are also interconnected. I/O is controlled using a simple "Telnet" protocol.

- RS-232/485 serial port accessible over Ethernet
- 8 digital inputs (7 – 24 V)
- 8 outputs (max 50 V / 100 mA)
- SDK for various programming languages (HWg-SDK)



I/O Controller 1204

IP (Ethernet) enabled RS-232/485 serial port, 12 inputs, 4 outputs, "SOHO" version. Typical applications include remote access to dry contact inputs, serial port and signaling from a server-based application.

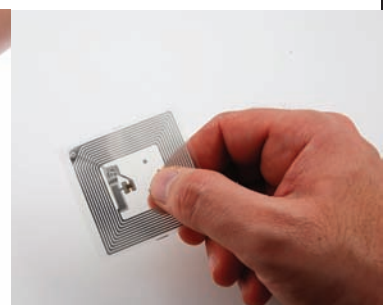
- RS-232/485 serial port accessible over Ethernet
- 12 digital inputs (dry contact)
- 4 outputs (max 50 V / 100 mA)
- SDK for various programming languages (HWg-SDK)
- Modes: Box-2-Box, TCP server, TCP Client / server, UDP



I/O Controller HWg-ER84a

IP (Ethernet) enabled RS-232/485 serial port, 8 inputs, 4 relay outputs. Two units can be connected over IP to transfer the Serial port & I/O states (Box-2-Box mode). Input 1 controls remote Output 1, with a delay of less than 200 ms. Serial ports are also interconnected. I/O is controlled using a simple "Telnet" protocol.

- RS-232/485 serial port accessible over Ethernet
- 8 digital inputs (7 – 24 V)
- 4 relay outputs (max 50 V)
- SDK for various programming languages (HWg-SDK)



PortStore

PortStore2 PL

PortStore ensures safe data transfer from a serial port over an IP network to a software application. Data is stored in flash memory. Typical applications involve replacing serial printers and central collection of printed outputs from surveillance systems or PBXs.

- RS-232/485 serial port accessible over Ethernet
- 2048 kB flash buffer, protected against power failures
- Virtual serial port for Windows (NT service)
- PortStore EYE collects data over the network and exports them to TXT files



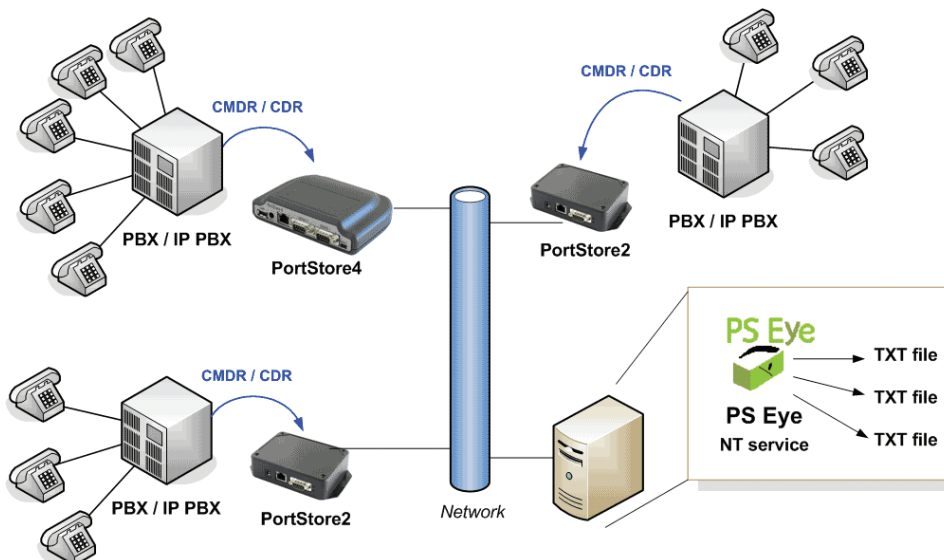
PortStore4

Reads RS-232 data as a serial printer would, or over network protocols (TCP Client/Server, TFTP, proprietary protocols). Data is stored in the internal memory and the unit provides safe and secure transfer to a SW application over the IP network (even by e-mail).

- 2x serial RS-232 port with 32 MB flash buffer
- User friendly WEB interface
- Data protected against power failures and suspicious values
- Supports data collection over IP using various protocols (custom protocols available)
- Protocols: TCP/IP, FTP, TFTP, Web/HTTP and SMTP
- Virtual serial port for Windows (NT service)
- PortStore EYE collects data over the network and exports them to TXT files



PortStore EYE



VSP - Virtual serial port

HW VSP3 – Single

HW VSP3 is a software driver that adds a virtual serial port to the operating system (e.g. COM5). This port is redirected over TCP/IP to another hardware interface, determined by the IP address and the port. HW VSP3 is an updated version of HW VSP and adds support of NT services and Windows Vista.

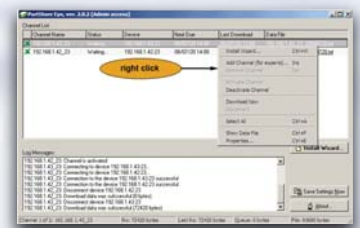
HW VSP3 – Multi

Virtual serial port for Windows XP and Vista. Supports up to 64 serial ports and up to 64 IP addresses. Supports only HW group products in the NVT mode.



PS EYE

Windows application for collecting data from PortStore2 and PortStore4. Exports data to text files. The text files can be processed by proprietary applications. Runs as a NT service. Free version for 3 devices (3 IP addresses).



Hercules

Debugging and testing tool for remote IP serial port products (PortBox, I/O Controller, IP Relay, PortStore).

Includes: UDP setup, Serial (RS-232 terminal), TCP Client (Telnet), TCP Server, UDP (UDP terminal) and Test mode (I/O functions).



IPRC CMD

Command line utility for Windows and Linux which controls outputs of the I/O Controller or IP Relay units. With a command, a given output can be set high or low. Works only with IP Relay and all types of I/O Controller units.



HWg-SDK

Software Development Kit for programmers. SW solution to save time while integrating HWg devices with your application. Includes a library of functions and examples for Unix and Windows.

- Visual Basic (6.0) (all 3xx examples)
- Borland C++ (all 1xx examples)
- Delphi (all 4xx examples)
- Microsoft Visual C++ (all 2xx examples)
- .NET (all 5xx examples)
- Other (all 9xx examples)



IP Serial and VSP Product Comparison

IP Serial Products

	IP / WEB interface	Digital inputs	Digital outputs	Type of output	Serial port	Flash buffer	Configuration	Virtual serial port
I/O Controller 1204	—	12	4	Open collectors	RS-232/485	—	Telnet	✓
I/O Controller PL	—	8	8	Open collectors	RS-232/485	—	Telnet	✓
I/O Controller: HWg-ER84a	—	8	4	Relays	RS-232/485	—	Telnet	✓
II/O Controller: HWg-ER88a	—	8	8	Open collectors	RS-232/485	—	Telnet	✓
IP Relay HWg-ER02a	—	—	2	Relays 110/230V	RS-232/485	—	Telnet	✓
PortBox	—	—	—	—	RS-232/485	—	Telnet	✓
PortStore2 PL	—	—	—	—	RS-232	2 MB	Telnet	✓
PortStore4	✓	—	—	—	2 RS-232	32 MB	Web	✓
IP WatchDog HWg-WR02a	✓	—	2	Relays 110/230V	RS-232	—	Web	—

VSP Products

	Number of devices	Windows XP	Windows Vista	Windows 7	Windows Server 2003	Windows Server 2008
VSP 3 single	1	✓	✓	✓	✓	✓
VSP 3 multi	64	✓	✓	✓	✓	✓

VSP3 Multi supports HW group devices only. Both versions support 32-bit and 64-bit operating systems.

HWg

HWg distributor

HW group s.r.o.
U pily 3/103
Prague 4
Czech Republic

Tel.: +420 222 511 918
Fax: +420 222 513 833

www.HW-group.com

