

Poseidon Family Application



- Closure dry contact
Send e-mail



- High/Low temperature
Send SMS



- High relative humidity
Send SNMP Trap



- General voltage/current input
Value accessible via XML (for IS)



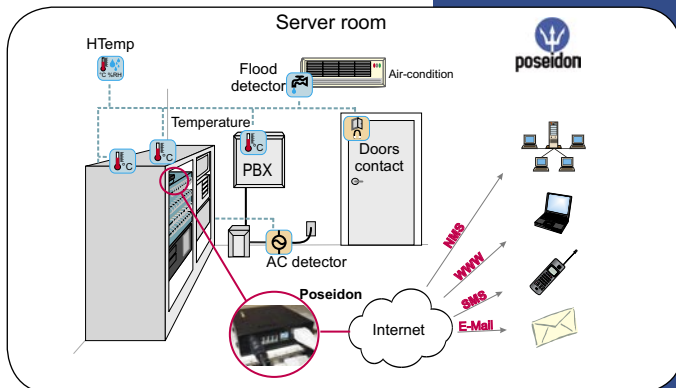
- Smoke/Fire detector
Switched on a horn



- Water leak detector
Turn on a pump



- Door contact
Set an alarm for security service



Access via:

- WWW interface
- SNMP (SNMP Trap)
- XML
- Modbus/TCP
- GSM SMS
- E-mail

Alarm methods:

- SNMP
- SNMP Trap
- SMS
- XML
- E-mail

Support

- SDK (Software Development Kit)
- Free application and configuration software
- SNMP software
- Applications examples in several programming languages (Java, C#, VB ...)
- Supported software - InTouch, Control Web, TIRS.NET, LabView, WinCC
- Works with most of the SCADA systems (OPC server and I/O server via Modbus/TCP)

www.hw-group.com

HW group s.r.o., U Pily 3/103
143 00 Praha 4 - Modřany

Poseidon 1250 – The top-end model

- Up to 42 sensors connected via RS-485 or 1-Wire bus
- 3 Dry Contact inputs and 2 outputs
- Supported protocols - SNMP, SNMP trap, XML, Modbus/TCP
- Sending an e-mail or SNMP trap when threshold values are exceeded

Poseidon 2251 – Logged version

- Saves up to 40 000 measured values to memory
- Real-time Clock for logging the events
- Sends an e-mail when values exceed safe range

Poseidon 3262/3265 – small stores, premises

- Basic version for 2(5) temperature sensors through 1-Wire bus
- Sends SMS via external GSM modem
- Model 3265 with Modbus/TCP support

Poseidon 3266 – server rooms

- 5 temperature sensors via 1-Wire bus
- 4 Dry Contact inputs
- Sends an e-mail when contact closes or temperature rises

Poseidon 3268 – independent environment

- 5 temperature sensors via 1-Wire bus
- 4 Dry Contact inputs
- 2 Relay outputs (flexible)
- Signalisation of alarm state when contact closes

www.hw-group.com

HW group s.r.o., U Pily 3/103
143 00 Praha 4 - Modřany

Poseidon Family Models

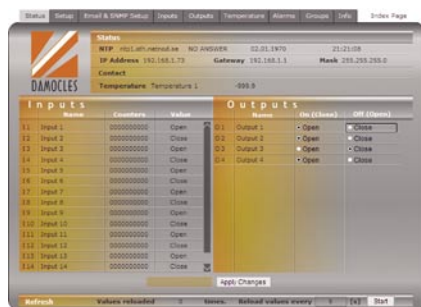


Poseidon



Damocles Family Models

Damocles Family Application



Damocles 2404 / Damocles 0816

- 24 / 8 inputs, galvanic isolation
- 4 / 16 outputs (relay)
- Temperature sensor via RS-232
- All inputs equipped with pulse counters (Modbus/TCP)
- All parameters are accessible over WWW, SNMP, Modbus/TCP, XML
- Sending an e-mail or SNMP trap when threshold values are exceeded
- Independent group's alarms intelligence

Damocles MINI

- Basic version - often used in IT field
- 4 isolated inputs
- 2 relay outputs (flexible)
- All inputs are with counters

Damocles 0808e

- Embedded version
- 8 TTL inputs
- 8 TTL outputs
- Supports RS-232 temperature sensors
- User customisation supported

- Closing the external contact
Closes the Relay
- Closure the door contact
Send SMS
- Ventilator failure
Send SNMP Trap
- High temperature in a accumulator room
Start air-conditioning
- Power failure
Lights up and start back up power supply



Access via:

- WWW interface
- SNMP (SNMP Trap)
- XML
- Modbus/TCP
- GSM SMS
- E-mail

Alarm methods:

- SNMP
- SNMP Trap
- E-mail
- SMS
- XML

Support:

- SDK (Software Development Kit)
- Free application and configuration software
- SNMP software
- Application examples in several programming languages (Java, C#, VB ...)
- Supports InTouch, Control Web, TIRS.NET, Lab-View, WinCC
- Works with most of the SCADA systems (OPC server and I/O server over Modbus/TCP)

