

[www.hw-group.com](http://www.hw-group.com)

## Monitoring

## Remote sensor status monitoring and administration over IP and GSM

HW group, based in the Czech Republic, manufactures a complete portfolio of remote monitoring products. HWg solutions help you monitor temperature, security, power supply and access control systems at your critical sites.

The flexibility and scalability of our solutions lets you monitor one site or thousand sites.

We can supply a complete system as well as individual sensors.

### HWg application areas:

Telecom carriers, data centers, banks, automotive industry, highway network management, suppliers of IT services, universities, as well as small and medium enterprises.

### Pre-sales and post-sales support:

We can design and implement a custom solution – we will help you design your own system, choose appropriate sensors, and document the project.

We will help you choose a NMS (central monitoring system), or develop a custom application. We can even supply a complete system based on your requirements.

You can rely on our alerts to critical events being timely.

Just choose their form – SMS, e-mail, pop-up window, or a call from an operator.

## Applications

Data centers, 19" racks

Monitoring of IT systems

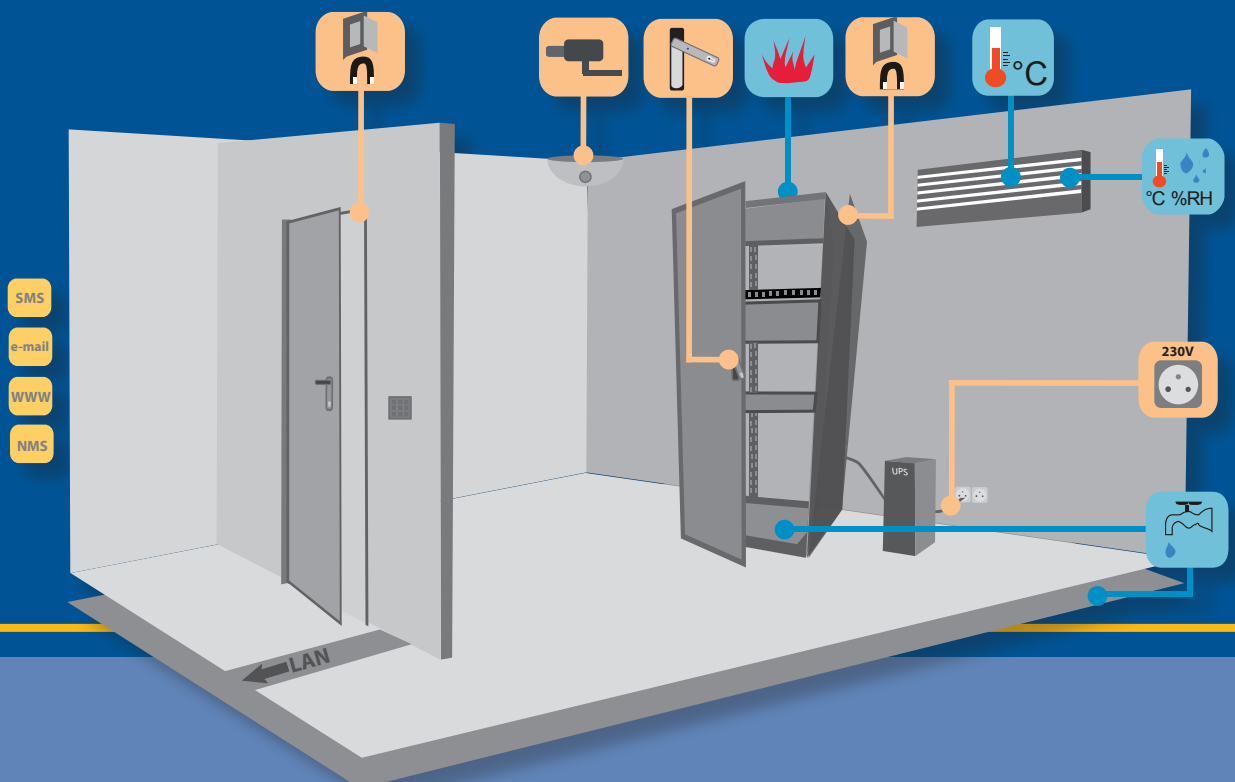
Monitoring of cable paths and cable ducts

Monitoring of energy consumption and UPS

Environment monitoring in building / shopping centers

Monitoring of storages and warehouses

Storage of medicaments



# LINE OF PRODUCTS

## IT Systems

### Poseidon 3262

Basic model for simple IT applications. Sends e-mail, supports SNMP.

Up to 6 sensors:  
Temperature or humidity (RJ11)



### Poseidon 3266

Economy model with dry contact inputs (relay contacts) for SOHO applications. Supports SNMP, sends e-mail and SNMP traps.

Up to 7 sensors:  
Temperature or humidity (3 RJ11 sensors)  
Door contact, smoke detector,  
flood detector...



### Poseidon 3268

Monitoring and control with 4 RJ11 sensors, digital inputs (contacts) and outputs (relay). Supports XML, SNMP, sends e-mail and SNMP traps.

Up to 8 sensors:  
Temperature or humidity (4 RJ11 sensors)  
Door contact, smoke detector,  
flood detector...

2 relay outputs:  
IP Thermostat mode,  
remote reset/power cycling



### Damocles MINI

Basic model for small IT and SOHO applications. Monitoring and control over IP with digital inputs (dry contacts) and outputs (relay). Supports XML, Modbus/TCP, SNMP, sends e-mail and SNMP traps (4 recipients).

Inputs: 4 dry contacts  
Outputs: 2 relay (max 50V)



**Poseidon measures values and parameters by means of up to 50 sensors in range of up to 1000 meters and has several digital inputs and outputs. Values are available over IP network.**

*Primary parameters of Poseidon units:*

Embedded WEB server, GUI  
Unified M2M interface (SNMP, XML, Modbus/TCP, Email)  
Alarm state reaction

*Poseidon models differ by:*

Number of supported 1-Wire sensors  
Number of supported RS485 sensors  
Number of dry contact inputs and relay outputs  
Support of sending SNMP trap and SMS  
Support of logging of measured values to internal storage (flash)

## GSM / GPRS Remote Monitoring

### HWg-Tg11

Temperature monitoring and logging over GSM/GPRS. Upon alarm, sends a SMS to a technician and an e-mail to the central system. Stored data (up to 1Mb flash) are periodically sent as e-mail attachments.

Alarm alerts: Ringing a number, SMS, e-mail  
Temperature sensor: Stainless steel -30°C to +120°C



### Poseidon 3265

Independent GSM and IP monitoring for SOHO applications. Upon alarm, sends SMS over a GSM modem and e-mail / SNMP trap over IP.

Up to 5 sensors: Temperature or humidity (RJ11)



**Poseidon**

# LINE OF PRODUCTS

## Data Centres

### Poseidon 4002

Monitoring of security and operating conditions for data centers. Fits into a 19" or 10" rack. Features digital inputs (contacts) and outputs (relay), RJ11 sensors. Supports XML and SNMP, sends SMS, e-mail and SNMP traps.

Up to 18 sensors: Temp, humidity, DC current  
 Door contact, smoke detector, flood detector...  
 2 relay outputs: Thermostat function, remote reset/power cycling

*For further data centre solutions in HWg portfolio please contact our sales team.*



## Industrial Applications

### Poseidon 1250

Monitoring for industrial applications. Up to 44 sensors, up to 1000 m. M2M protocols: Modbus/TCP, XML, SNMP Alerts: Email, SMS, SNMP Trap Local 1Wire and industrial RS-485 bus available. Three dry contact inputs.

Up to 10 sensors: Temperature or humidity (1Wire bus: RJ11)  
 +31 sensors: Temperature, Pt100, humidity, pressure, dew point, voltage, current, ... (RS485: RJ45 sensors up to 1000 m)



### Poseidon 2251

Monitoring and logging for industrial applications. Up to 44 sensors, up to 1000m. Stored data are periodically e-mailed as attachments or MS Excel files. M2M protocols: Modbus/TCP, XML Alerts: E-mail and SMS (GSM modem) Local 1Wire and industrial RS-485 bus available. Three dry contact inputs.

Up to 10 sensors: Temperature or humidity (1Wire bus: RJ11)  
 +31 sensors: Temperature, Pt100, humidity, pressure, dew point, voltage, current, ... (RS485: RJ45 sensors up to 1000 m)



### Poseidon 3468

Industrial monitoring and control with 4 RJ11 sensors, digital inputs (contacts) and outputs (110/230V relay). M2M protocols: Modbus/TCP, XML, SNMP Alerts: E-mail and SNMP trap.

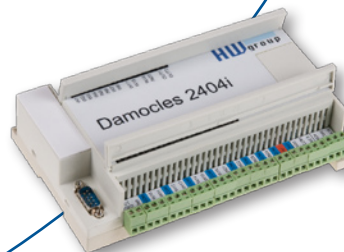
Up to 8 sensors: Temperature or humidity (1Wire bus: 4 RJ11)  
 Door contact, smoke detector, flood detector...  
 2 relay outputs: IP Thermostat mode, remote reset/power cycling



### Damocles 2404i

Industrial model that fits on a DIN rail. Monitoring and control over IP with 24 digital inputs (dry contacts) and 4 outputs (relay). Supports XML, Modbus/TCP, SNMP, sends e-mail and SNMP traps (4 recipients).

Inputs: 24 dry contacts  
 Outputs: 4 relay (max 50V)  
 Sensors: Supports Temp-232 thermometer connected to RS-232(DB9)



## Autonomous Restart

### IP WatchDog Lite

Monitors the functioning of the network interface of two IP devices. Upon failure, a device is automatically restarted, before the end user notices a problem. Restart can be issued over the WEB with a password. With the PowerEgg module, a 110/230V device can be power-cycled.

Inputs: PING to 4 different IP addresses to verify functionality  
 Detection methods: Active ping, passive ping, active / passive HTML request  
 Outputs: 2 channels: relay contacts (powered / double-throw) for reset



**Damocles connects more dry contact inputs and outputs to IP network.**

*Primary parameters of Damocles units:*

- Unified Graphical User Interface
- Unified M2M interface (SNMP, XML, Modbus/TCP, Email)
- Pulse Counter on dry contact inputs
- Macro language for composing e-mail contents
- Box-2-Box mode
- Outputs can react to a SNMP Trap Alarm sent over IP from any Poseidon / Damocles sensor.
- No additional SW necessary.

*Damocles models differ by:*

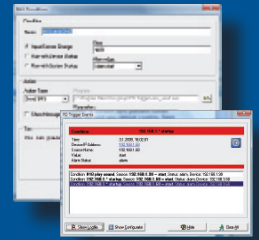
- Number of dry contact inputs
- Number of relay outputs
- Support of RS232 temperature probes

# Software Applications

## HWg PD Trigger

Windows application for handling alarms & events (SNMP traps). Alarms can be identified and sorted by sensor name and type, just like filter rules in Outlook. Conditions can be tied with actions, such as displaying a pop-up window, playing a sound, sending a SMS or activating a remote output.

Supports: Damocles family, Poseidon family (SNMP trap)  
Actions: Pop-up window, play a sound, start an application, start a service, send a SMS via a GSM modem (containing alarm text), open/close a remote relay contact.

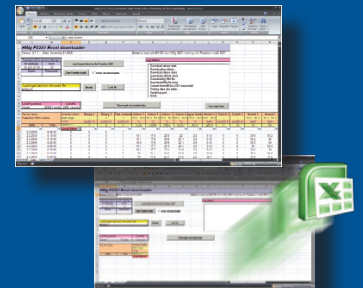


## HWg PD MS

Windows application for data logging and quick export of reports to MS Excel. Sensor values from the connected devices are stored in a database. Values are received by XML (http) or e-mail. Works with PD Trigger to handle alarms.

The database can be accessed from a MS EXCEL, or through an application interface (examples available for .NET, VB, C#, Borland C++, Delphi, Microsoft C++).

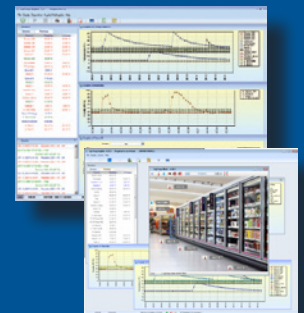
Supports: Damocles family, Poseidon family (XML over http / e-mail)  
Outputs: MS Excel report



## CapTemp

Windows application for data collection and analysis. Data are stored in a database, can be exported as images or MS Excel sheets, displayed over a map background. CapTemp is intended for food & other industry applications.

Supports: Damocles family, Poseidon family, HWg-Tg11, I/O Controller  
Actions: Pop-up window, sound, start an application, remote relay output, send a SMS (with the alarm text) via a GSM modem.



## INM - Intellipool

Application for remote monitoring of IT infrastructure. Fully web-based UI, simple installation, automatic device detection. Sends alarm alerts when defined events occur. Conditions can be tied to actions and invocations of external applications. Very simple installation, concise graphs, detailed documentation.

Supports: Damocles family, Poseidon family (SNMP)  
Actions: Pop-up window, play a sound, start an application, start a service, send a SMS alert via a GSM modem, send an e-mail.



## HWg DCD

Application for data center infrastructure monitoring. Graphical interface for opening/closing rack doors and remote monitoring of IT equipment.

Includes rack access password database, event logging, rack access logging. With an external GSM modem, the application can be controlled via SMS to open racks using mobile phones and access codes.

Supports: HWg products for data centers



**PHP logger** Centralized server-based software application for data logging.

**HWg SDK:** Software Development Kit with an ActiveX interface and sample programs for VB, C#, .NET, Borland C++, Microsoft C++, Borland Delphi, JAVA, PHP and more.



	Poseidon 3262	Poseidon 3265	Poseidon 3266	Poseidon 3268	Poseidon 3468	Poseidon 1250	Poseidon 2251	Poseidon 4002	Damocles MINI	Damocles 2404i	IP WatchDog	HWg Tg11
--	---------------	---------------	---------------	---------------	---------------	---------------	---------------	---------------	---------------	----------------	-------------	----------

IP / WEB interface	✓	✓	✓	✓	✓	✓	✓	✓	✓	✓	✓	-
GSM (SMS)	-	✓	-	-	-	✓	✓	✓	-	-	-	✓
GSM (GPRS / data)	-	-	-	-	-	-	-	-	-	-	-	✓
Email	✓	✓	✓	✓	✓	✓	✓	✓	✓	✓	-	✓
SNMP, SNMP Trap	✓	✓	✓	✓	✓	✓	-	✓	✓	✓	-	-
logger	-	-	-	-	-	-	✓	-	-	-	✓	✓
Inputs (contacts)	-	-	4	4	4	3	3	6	4	24	-	-
Outputs (relay contacts)	-	-	-	2	2	-	-	2	2	4	2	-
Sensors (RJ11)	6	5	3	4	4	10	10	12	-	-	-	-
Industrial sensors (RS485):	-	-	-	-	-	31	31	-	-	-	-	-
RS-232 temperature sensor	-	-	-	-	-	-	-	-	-	✓	-	✓

### Sensors

Temperature

Humidity / dew point

Digital inputs (DI) / contacts

- Air flow
- Water leak detector
- Smoke and gas detector
- Motion detector

External analog values

- Voltage 0 to 10V
- Current 4 to 20mA

Digital outputs

- Control for 110/230V



Manufacturer:

**HW group s.r.o.,**  
 Rumunská 26,  
 120 00 Praha 2  
 Czech Republic

Shipping address :

U pily 3/103  
 143 00 Praha 4  
 Czech Republic  
 Tel.: +420 222 511 918  
 Fax: +420 222 513 833  
 E-mail: sales@hwg.cz

